



# Gigi Grand

## Instructions

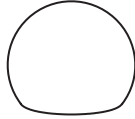
Rev 21

### Your box should contain

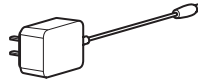
1x Gigi tall  
body



1x Gigi tall  
head

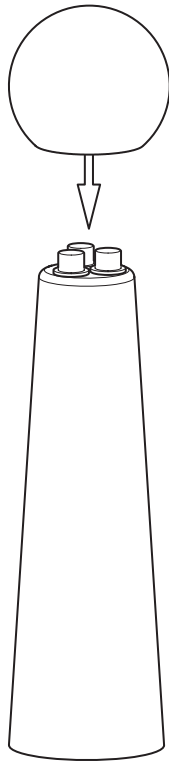


1x Power  
supply

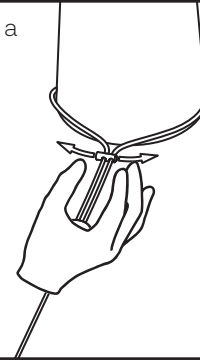


Unpack all components from the box and dispose of the packaging. Please recycle.

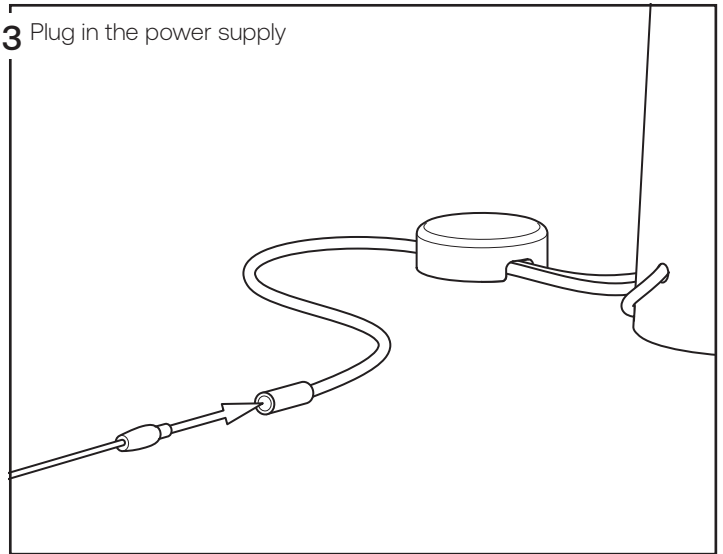
1 Place Gigi's head on his body



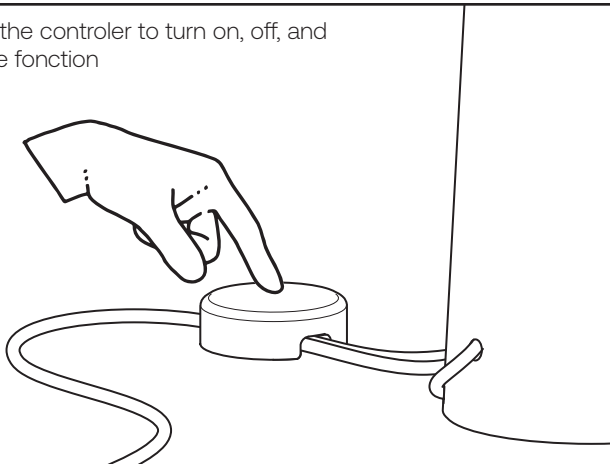
2 Adjust cord lock to have a pleasant cable bending



3 Plug in the power supply



4 Touch the controller to turn on, off, and change function



Tap	Fonction
Long press	Dim
1 tap	Turn On/Off
2 taps	Change color : 2200K, 2700K, 3000K, 3500K, and 4000K
3 taps	Activate Dim to warm